

CAM2 Measure X



Measurement Icons

Easily accessible measurement commands provide point-and click simplicity – the most user-friendly geometric feature measurement on the market

Feature Labels

Graphical on-screen labels provide more action-ready data by allowing users to review results on-screen without picking a specific feature

Enhanced Layer Management

Pre-designed layers provide quick access to specific feature groups, including CAD, circles, spheres, etc.; simplifies the organization of measured and nominal data

The Fastest Software for CAD Files of Any Size!

CAM2 Measure X specializes in feature measurement/inspection and CAD-to-part comparison, where every measured part can be compared to engineering design files. In real-world tests, CAM2 Measure X exceeds the performance capability of any other CAD-based measurement software on the market. The new version of the program allows users load and render very large files faster than any other program – regardless of the system. The superior file-handling capability also empowers users to deal with entire CAD files.

Most Common Applications

Aerospace: Alignment, Tooling & Mold Certification, Part Inspection

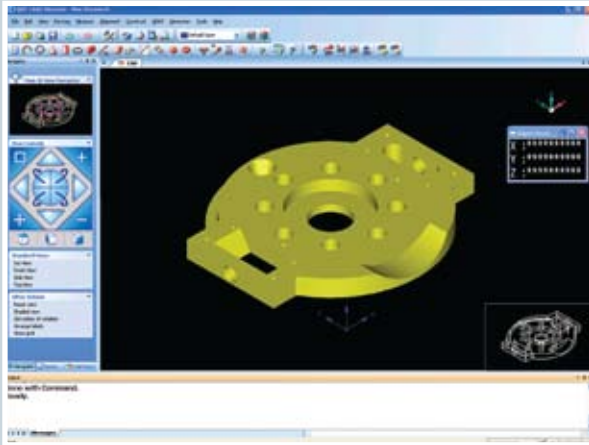
Automotive: Tool Building & Certification, Alignment, Part Inspection

Metal Fabrication: OMI, First article inspection, Periodic Part Inspection

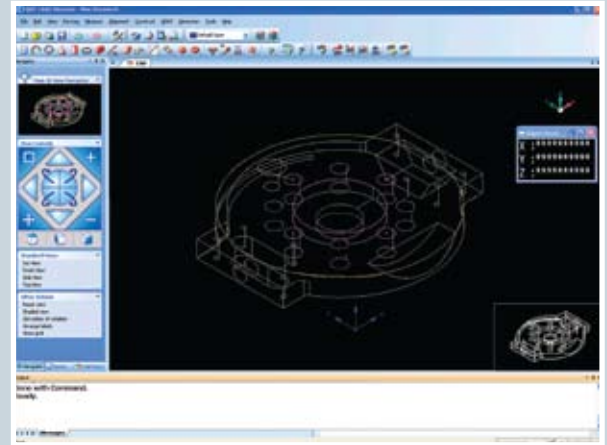
Molding/Tool & Die: Mold and Die Inspection, Prototype Part Scanning

Features

- ▶ Simple Go/No-Go Measurements
- ▶ CAD-to-Part Comparisons
- ▶ Full Functioned Feature Measurement
- ▶ Repeat Part Programming
- ▶ CAM2 SPC Graph SPC Reporting

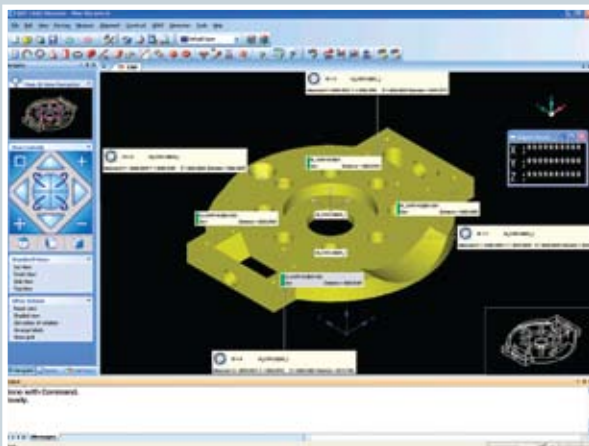


1. Define reference frame and set up an alignment

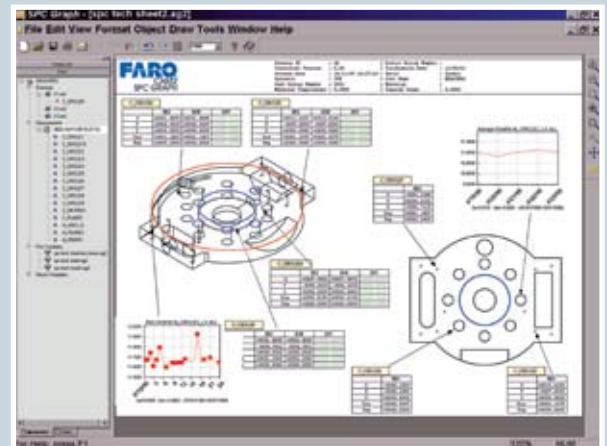


2. Measure your part

3. Compare measurements to CAD (Optional)



4. Report your results



Specifications

Platform: Windows® 2000 • Windows® XP

Data Input: Included - IGES, ASCII, VDA/FS & ACL • Optional - Unigraphics, Solidworks, Parasolid, CATIA, Solid Edge, ProE & Inventor

Data Output: IGES

Languages: English • French • German • Spanish • Italian • Japanese • Portuguese • Chinese

ISO 9001
BUREAU VERITAS
Certification



GSA Contract Holder

LABORATORY
ACCREDITATION
BUREAU

ISO-17025 : 2005
ACCREDITED
Certificate # L1147